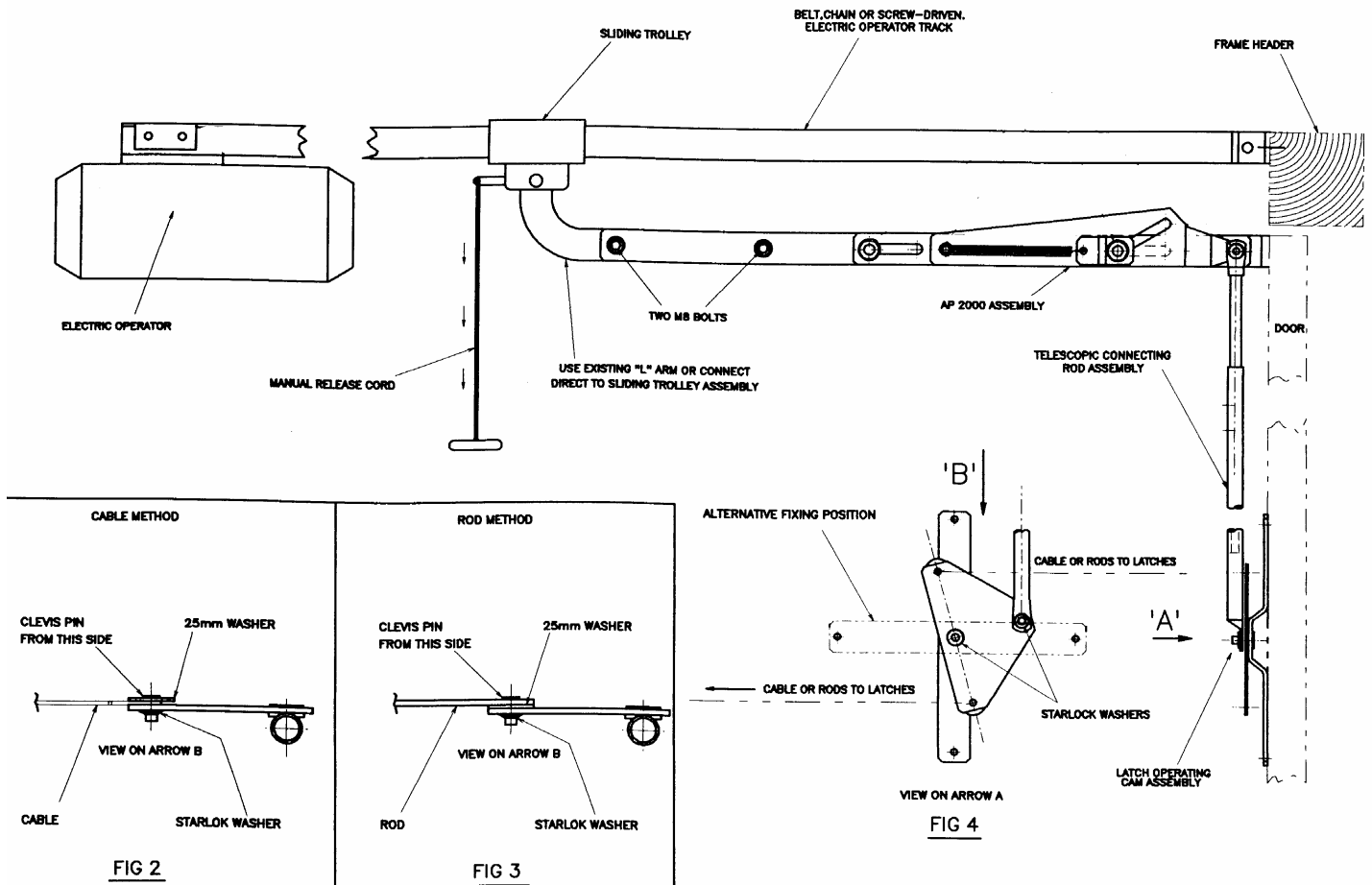


# Securi-Dor AP2000 Automatic Security Locking System

(Protected by patent No. GB 9619157.2)

For the automation of the original manual latches on one-piece horizontally tracked remote controlled garage doors

FIG 1



## FITTING INSTRUCTIONS

For use on one-piece retractable garage doors with either cable operated or sliding rod type latch systems compatible with most electric operators - (not compatible with Henderson Sprint & Marathon operators)

1. Close the door and check that the top wheels are not supporting the weight of the door when closed as this can prevent the door from closing properly at the bottom, adjust the track position on the doorframe if necessary, check the door alignment and check that the existing manual side latches or sliding bars engage freely onto the striker plates.
2. Remove the existing connecting bar linking the operator sliding trolley to the door bracket. (and "L" bracket if fitted)
3. Operate the manual disconnect device to disengage the operator from the drive and fit the new connecting bar assembly in place of the original. An "L" connecting bracket may be used as in Fig 1 to improve horizontal alignment if required.  
**Hint:** it may be necessary to reposition or modify the door header bracket as the bracket must be positioned as high as possible on the door to give clearance for the de-latching lever on the new assembly when the door is open.  
A door stop should be fitted to the top of the door to limit unwanted door movement and stress when the door is fully closed.
4. Remove the original lock cam mechanism from the back of the door handle, retain the latch cables or rods for re-use.
5. Fit the 1/2" dia telescopic connecting rod over the 3/8" rod and fit the new latch operating cam assembly at a central position on the door at a height corresponding to the side latches using screws, or the two 4.8mm pop rivets supplied.  
**Note:** If the door has rigid bar type locking continue to stage 7 and then follow the procedure in stage 6 to make final adjustments to the latches.
6. Adjust the telescopic connecting rod length to achieve a cam plate angle as shown in Fig 4, then secure the telescopic joint with the two self-drilling, self tapping screws supplied.
7. Connect the two original rigid latch bars (as fig 3) or side latch cables (as fig 2) to the rear of the latch operating cam assembly using 1/4" clevis pins, penny washers & starlock washers, (supplied) adjust cable lengths so that the door latches are withdrawn by 5mm.
8. Lubricate all moving parts on the Securi-Dor device, door arm pivot points & rollers etc. with oil. (engine oil recommended)
9. Re-engage and carefully run the electric operator and re-set the open & close limit stop adjustments making sure that the new connecting bar assembly is compressed to 80 - 90% of its travel when the door is closed. (see self adhesive label)
10. Check the operation of the latches and make final adjustments making sure the latches engage when the door is closed by the electric operator, and release prior to opening, also check the safety-stop system and make adjustments to the trip sensitivity if necessary.